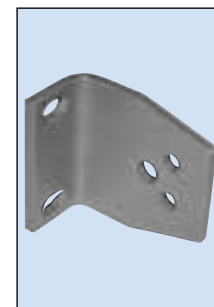
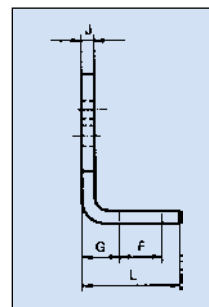
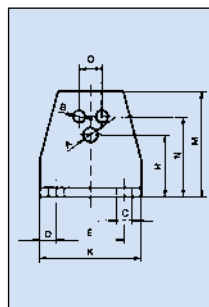


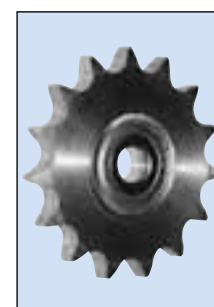
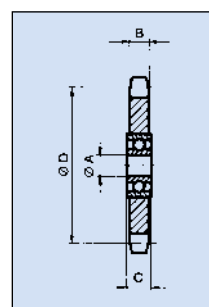
ROSTA-Spannelemente

Support Typ WS



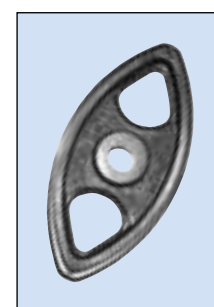
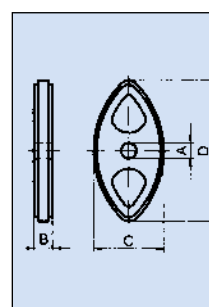
Artikel-Nr. Ketten Fuchs	Typ	passend zu SE	Abmessungen in mm																	Gewicht kg
			A	B	C	D	E	F	G	H	J	K	L	M	N	O				
06 590 001	WS 11	11	6,5	5,5	7,0	7,5	30,0	13,0	11,5	27,0	4,0	45,0	30,0	46,0	35,0	10,0	0,08			
06 590 002	WS 15	15	8,5	6,5	7,0	7,5	40,0	13,0	13,5	34,0	5,0	55,0	32,0	58,0	44,0	12,0	0,15			
06 590 003	WS 18	18	10,5	8,5	9,5	10,0	50,0	15,5	16,5	43,0	6,0	70,0	38,0	74,0	55,0	20,0	0,28			
06 590 004	WS 27	27	12,5	10,5	11,5	12,5	65,0	21,5	21,0	57,0	8,0	90,0	52,0	98,0	75,0	25,0	0,70			
06 590 005	WS 38	38	16,5	12,5	14,0	15,5	80,0	24,0	21,0	66,0	8,0	110,0	55,0	116,0	85,0	35,0	0,90			
06 590 006	WS 45	45	20,5	12,5	18,0	20,0	100,0	30,0	26,0	80,0	10,0	140,0	66,0	140,0	110,0	40,0	1,80			

Spannrad Typ N



Artikel-Nr. Ketten Fuchs	Typ	für Rollen- kette DIN-Nr. 8187	Zähne- zahl	Abmessungen in mm				Gewicht in kg
				A	B	C	D	
06 500 001	N3/8"-10	06 B	15	10,0	5,3	9,0	45,81	0,06
06 500 002	N1/2"-10	08 B	15	10,0	7,2	9,0	61,08	0,15
06 500 003	N1/2"-12	08 B	15	12,0	7,2	12,0	61,08	0,15
06 500 004	N5/8"-12	10 B	15	12,0	9,1	12,0	76,36	0,27
06 500 005	N5/8"-20	10 B	15	20,0	9,1	15,0	76,36	0,29
06 500 006	N3/4"-12	12 B	15	12,0	11,1	12,0	91,63	0,47
06 500 007	N3/4"-20	12 B	15	20,0	11,1	15,0	91,63	0,47
06 500 008	N1"-20	16 B	13	20,0	16,1	15,0	106,14	0,88
06 500 009	N1 1/4"-20	20 B	13	20,0	18,5	15,0	132,67	1,60
06 500 010	N1 1/2"-20	24 B	11	20,0	24,1	15,0	135,23	1,93

Kettengleiter Typ P



Artikel-Nr. Ketten Fuchs	Typ	für Rollen- kette DIN-Nr. 8187	Abmessungen in mm				Gewicht in kg
			A	B	C	D	
06 540 001	P3/8"	06 B	8,0	10,2	37,0	74,0	0,02
06 540 002	P1/2"	08 B	10,0	13,9	48,0	96,0	0,03
06 540 003	P5/8"	10 B	10,0	16,6	63,0	126,0	0,05
06 540 004	P3/4"	12 B	12,0	19,5	72,0	148,0	0,07